

1:20,000 RECONNAISSANCE FISH AND FISH HABITAT INVENTORY
CULLON CREEK
470-245700-
KISPIOX STUDY AREA
FISHERIES / INTERPRETIVE MAP
SKEENA CELLULOSE INC.
KISPIOX FOREST DISTRICT
1999
MAPSHEET# 093M051 Map 11 of 11

100000002000Meters

Scale 1:20,000
Contour Interval (20m) Projection UTM

Date: 2000/03/09 (yyyy/mm/dd)

Company: EL of TRITON Environmental Consultants Ltd.

N
W
E
S

STREAM INFORMATION SUMMARY

12345 Interm Locational Point (ILP)
123-123456-12345 Watershed Code

18 Reach Gradient

15 Sample Site ID

Sample Site

Stream Reach Boundary

CO DV RB
2-12 S2

Channel Properties

Channel Width

Stream Classification () Inferred

123-123456-12345 Watershed Code

Waterbody Identifier

Lake Summary Symbol

Lake (L) or Wetland (W)

Surface Area

Maximum Depth

pH

Conductivity

TDS

Lateral Area

L - 175 - 8.0 - 6.8 - 29 20 - 15

CSU NFC NSC PCC RSC RB WSU

Fish Code(s)

Obstructions

Beaver Dam

Falls

Persistent Debris Accumulation

Cascade

Culvert

Dam

Features

Eroded Bank

Bridge

Rapids

Alluvial Fan

General Crossing

Wetland / Marsh

Colluvial Fan

Landslide Debris

Subsurface Flow

Talus Cone

Landslide Area

Tributary

Rock Outcrop

Boulder Garden

Dewatered Section

Slumping Bank

Braided Stream

Side Channel

Enhancement / Management Activities

Fisheries Sensitive Zone

WSC Information

12AB123 Hydrometric station

Stream Classification

Fish Present (Confirmed)

Fish Not Present (Confirmed)

No Visible Channel (NVC)

Fish Present (Inferred)

Fish Not Present (Inferred)

Non-Classified Drainage-Wetland (NCD-W)

TRIM Base Map Anomalies

Field-Identified Stream

Base Map Discontinuity

Base Map Features

River / Stream

Marsh

Road - loose surface

River / Stream - intermittent

Swamp

Road - rough surface

River / Stream - indefinite

Glacier

Index Contour

Lake

Icefield

Index Contour - indefinite

Lake - intermittent

Sand / Gravel Bar

Project Boundary

Lake - indefinite

Island

* NOTE: Reach Gradients were calculated from TRIM maps during planning Phase 1 2 3 of this project.

FISH SPECIES

CODE	DESCRIPTION
NFC	No Fish Caught
NS	Not Sampled
BT	Bull Trout
CO	Coho Salmon
CT	Cutthroat Trout (General)
DV	Dolly Varden
LNC	Longnose Dace
NSC	Northern Squawfish
MW	Mountain Whitefish
RB	Rainbow Trout
ST	Steelhead Trout

Historical - Symbology

CODE	DESCRIPTION
▼	Fish Presence - Salmon
▼	Fish Presence - Sport
▼	Fish Presence - Regionally Significant
▼	Fish Presence - Other
▼	Fish Observation - Salmon
▼	Fish Observation - Sport
▼	Fish Obs - Regionally Significant
▼	Fish Observation - Other
▼	Fish Spawning Area
▼	Historical Sample Site
11	Historical Sample Site Number

Source: MELP

PROJECT STUDY AREA BOUNDARY

103P.078 1 of 11

103P.079 2 of 11

103P.080 3 of 11

093M.071 4 of 11

103P.068 5 of 11

103P.069 6 of 11

103P.070 7 of 11

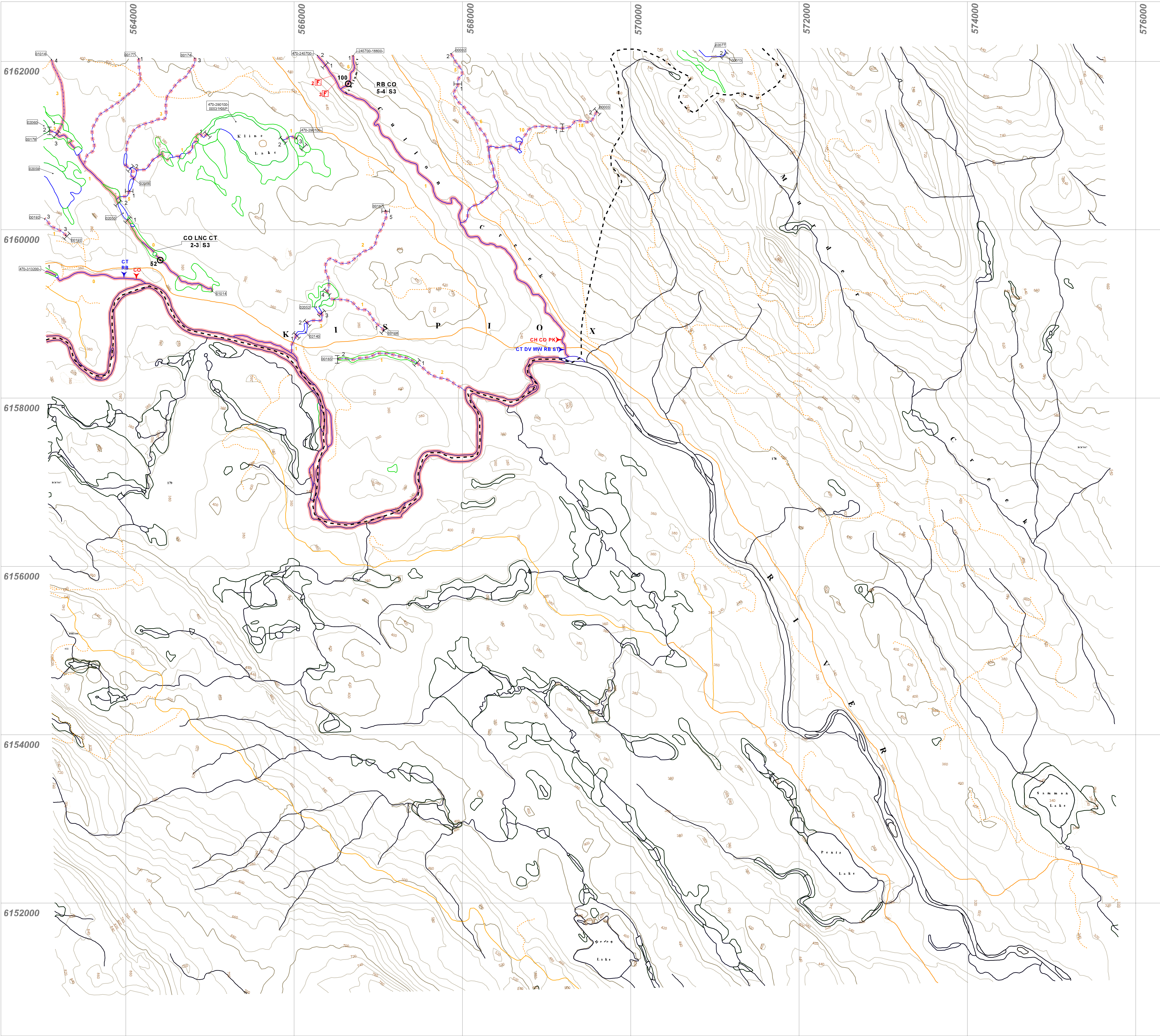
093M.061 8 of 11

103P.058 9 of 11

103P.059 10 of 11

103P.060 11 of 11

093M.051 12 of 11



"This product has been accepted as being in accordance with approved standards within the limits of Ministry quality assurance procedures. Users are cautioned that interpreted information on this product developed for the purposes of the Forest Practices Code Act and Regulations for example stream classifications, is subject to review by a statutory decision maker for the purposes of determining whether or not to approve an operational plan."

INVENTORY SOURCE INFORMATION CODES					
CODE	DESCRIPTION	CODE	DESCRIPTION	CODE	DESCRIPTION
BASE	Base Map	LE SYM	Lake Symbol	APP	Aerial Photography
TRIM	1:20,000 TRIM Maps	INV	Field Inventory	VID	Video, Approximate
NTS	1:50,000 NTS Maps	SS	Summary	VPC	Video, Corrected
OTH	Other Map Source	N/A	Not Applicable	OTH	Other
STR SYM	Stream Symbol	OTH	Other	FBH	Field Book
INV	Field Inventory	LOC	Location Information	INV	Field Inventory
SS	Summary	PDE	Field Estimate	SS	Summary
N/A	Not Applicable	PDO	Field GPS	N/A	Not Applicable
OTH	Other	APE	Aerial Photo Estimate	OTH	Other

FOREST PRACTICES CODE RIPARIAN CLASSES (STREAM CLASSIFICATION)				
Riparian Class	Average Channel Width (m)	Reserve Zone Width (m)	Management Zone Width (m)	Total RMA Width (m)
S1 Large River	> 100	0	100	100
S2	> 5 < 20	10	20	50
S3	1.5 < 5	20	30	40
S4	< 1.5	0	30	30
S5	< 3	0	30	30
S6	< 3	0	20	20

BASE MAP INFORMATION
Projection: UTM
Datum: NAD83
UTM Zone: 9

INVENTORY SOURCE INFORMATION
BASE: TRIM
LOC: FDG
HAB: INV
DATE INV: 1998/08/23
STR SYM: INV
LK SYM: N/A
FISH: INV
INV MGNT: MELP